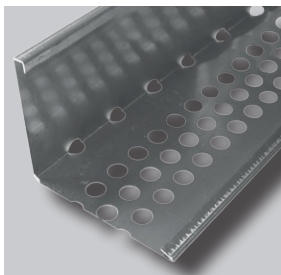


TECHNICAL DATA SHEET

ND RP-100 Edge Profile



ND RP-100 Edge Profile

The ND RP-100 Edge Profile is an L-shaped Edge Profile made out of aluminium. The profiles are used on roofs that are covered with extensive vegetation, but that lack a retaining kerb or parapet. The single ND RP-100 Roof Edge Profiles are connected through the ND RP-V Connectors.

Application

The ND RP-100 Edge Profile is component of the Nophadrain Extensive Green Roof System.

Properties

- Material: aluminium
- Drainage openings: approx. 22 pieces per meter, approx. \varnothing 15 mm
- Perforations bottom side: approx. 3 x 40 pieces per meter, approx. \varnothing 15 mm

Product	Dimensions (L x W x H)	Packaging
ND RP-100 Edge Profile	approx. 2,400 mm x 120 mm x 100 mm	per piece

NOPHADRAIN[®]
SMART GREEN ROOF SYSTEMS

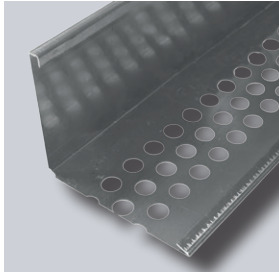
Nophadrain BV
Mercuriusstraat 10
6468 ER Kerkrade
The Netherlands

+31 (0)45 535 50 30
info@nophadrain.com

www.nophadrain.com

TECHNICAL DATA SHEET

ND RP-101 Edge Profile



ND RP-101 Edge Profile

The ND RP-101 Edge Profile is an L-shaped Edge Profile made out of aluminium. The profiles are used on roofs that are covered with extensive vegetation, but that lack a retaining kerb or parapet. The single ND RP-101 Roof Edge Profiles are connected through the ND RP-V Connectors.

Application

The ND RP-100 Edge Profile is component of the Nophadrain Extensive Green Roof System.

Properties

- Material: aluminium
- Perforations bottom side: approx. 3 x 40 pieces per meter, approx. \varnothing 15 mm

Product	Dimensions (L x W x H)	Packaging
ND RP-101 Edge Profile	approx. 2,400 mm x 120 mm x 100 mm	per piece

NOPHADRAIN®
SMART GREEN ROOF SYSTEMS

Nophadrain BV
Mercuriusstraat 10
6468 ER Kerkrade
The Netherlands

+31 (0)45 535 50 30
info@nophadrain.com

www.nophadrain.com